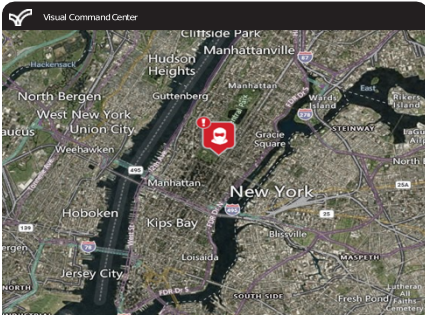


Rapid Resilience Impact Analysis

How intelligence informs & strengthens your executive protection posture



Summary

Brian Thompson, the CEO of UnitedHealthcare, was shot and killed outside of a Manhattan hotel where Thompson was attending an investor meeting. The suspect, Luigi Mangione, was arrested in Altoona, Pennsylvania days later. The incident has drawn significant public attention, with speculation surrounding both the suspect's motives and the broader implications for UnitedHealthcare, given ongoing controversies and protests against the company at the time of Thompson's death.

"The best way to protect your company and your executive assets from this risk is developing a comprehensive executive protection and secure journey management plan. An intelligence led approach can limit your risk exposure and enhance your executive protection in a variety of ways."

- Adam DeLuca, Everbridge Director of Risk Intelligence

Key highlights & helpful hints

[Comprehensive City and Country Reports](#)

Threats and risks present differently in different parts of the world. Having a comprehensive understanding of the threat landscape in certain areas - to include data driven crime maps, no-go zones, travel and cultural guidance, and risk assessments allows - executive protection teams to address the applicable risks from country to country.

Monitoring

Early detection of threat and risk is invaluable to executive protection. Monitoring collection platforms in real-time allows you to identify potential threats before they become major problems and enables executive protection teams to proactively manage risk to their clients in a timely manner.

Utilizing Different Types of intelligence

OSINT gathers information from publicly available sources. Human intelligence collects information obtained through direct contact with individuals who may have relevant insights. Signal intelligence monitors electronic communications and data to identify potential threats. Protective intelligence focuses specifically on identifying and assessing threats to an individual. These types of intelligence analyze incredible amounts of data from various sources to provide a comprehensive picture of the threat landscape to help shape risk assessments.

Trend Analysis/Threat Assessments

Looking at the threat landscape and doing comprehensive threat assessments allows security teams to anticipate potential risks and vulnerabilities, develop targeted mitigation strategies, and make informed decisions to safeguard the principal through detailed situational awareness, rather than simply reacting to incidents.

Situational awareness

By monitoring real-time information, intelligence provides a comprehensive understanding of the environment surrounding the executive, including potential dangers in specific locations or during travel.

[Request demo](#)