



Is PSIM right for your organization?

A quick assessment guide



Introduction

Welcome to the 'quick assessment guide' designed to help you determine if a Physical Security Information Management (PSIM) solution is suitable for your organization.

This guide provides a series of questions that assess your current security infrastructure and integration challenges. By completing this questionnaire, you can gauge whether a PSIM system could enhance your security operations and overall management efficiency.



What is PSIM?

PSIM stands for Physical Security Information Management. It's a software platform that integrates multiple unconnected security applications and devices, allowing them to be controlled through one comprehensive user interface. It provides enhanced situational awareness, streamlined incident management, and robust data analysis by integrating technologies such as CCTV, access control, fire detection, and perimeter detection systems.

Benefits of PSIM solutions

Implementing a PSIM solution offers significant advantages:

- Enhanced situational awareness: a unified view of all security systems.
- Streamlined incident management: quick verification and response to incidents.
- Improved coordination: efficient communication across all security and response teams.
- Comprehensive data management: robust audit trails and automated reporting.
- Operational efficiency: reduction in manual tasks and streamlined processes.

Determine your need for PSIM

This section contains targeted questions that help identify your need for a PSIM solution. Each question includes multiple-choice answers with assigned scores that quantify your current security system's integration level and operational efficiency.

Integration challenges

How well are your current security systems integrated?

- A. No integration, complete silos (+3)
- B. Limited, unreliable integration (+2)
- C. Mostly integrated, some issues remain (+1)
- D. Fully seamless integration (0)

Current systems

Which systems are currently in use? (Select all that apply)

- Fire detection and alert systems (+1 each)
- Public address systems (+1 each)
- CCTV surveillance cameras (+1 each)
- Access control systems (+1 each)
- Biometric identification systems (+1 each)
- Perimeter detection systems (+1 each)

Incident management

How are alerts and notifications managed?

- A. Manually, significant delays (+3)
- B. Partial automation, mostly manual (+2)
- C. Mostly automated, some manual intervention (+1)
- D. Fully automated, instant notifications (0)

SOPs and response

Do you have and follow standard operating procedures for security incidents?

- A. No SOPs in place (+3)
- B. SOPs exist but aren't consistently followed (+2)
- C. SOPs generally followed (+1)
- D. Well-defined and consistently followed SOPs (0)

Future integration vision

What are your plans for evolving your security system integration?

- A. Need complete overhaul, systems outdated (+3)
- B. Significant upgrades required for better integration (+2)
- C. Plan for gradual integration improvements (+1)
- D. Already optimally integrated, focus on maintenance (0)

Reporting and dashboards

Can you generate real-time dashboards and reports?

- A. No, all manual (+3)
- B. Limited automatic reports, manual dashboards (+2)
- C. Automatic dashboards, manual reports (+1)
- D. Fully automatic dashboards and reports (0)

Future plans

Are upgrades or replacements planned for your security systems?

- A. Yes, replacing outdated systems (+3)
- B. Considering upgrades, no firm plans (+2)
- C. Possible minor upgrades (+1)
- D. No changes needed, fully satisfied (0)

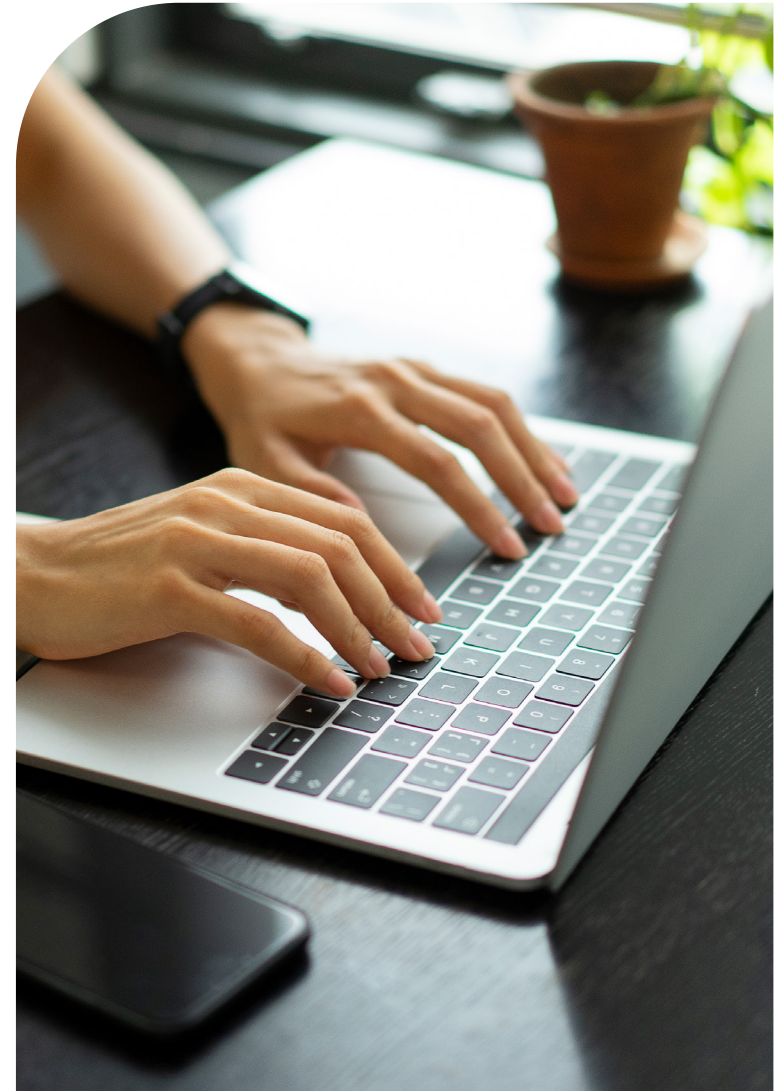
Scoring scale

After you've answered all the questions, sum your points to evaluate the potential need for a PSIM solution in your organization.

Low Need: 0-6 points

Moderate Need: 7-14 points

High Need: 15-24 points



Case study 1: Abu Dhabi Global Market Square (ADGMS)

Challenge:

ADGMS, a luxury business and hospitality hub, faced unique security challenges due to its status and the high-profile nature of its visitors, which include international dignitaries and business leaders. The challenges were compounded by the site's complex architecture and location on an island.

Solution:

ADGMS engaged PTS Middle East for a comprehensive security assessment. Subsequently, G4S, leveraging Everbridge Control Center, integrated all security technology into their Security Command Centre (SCC), enhancing control and responsiveness.

Benefits:

- Enhanced situational awareness and response: real-time data integration and automated SOPs accelerated response times and improved security incident resolution.
 - Adaptive security measures: flexible technologies that adapt to evolving security needs and proactive risk intelligence.
 - Improved efficiency: automated reporting drastically reduced the time and resources needed for security management.
- Consolidated control rooms: merging four control rooms into one, freeing up premium space for other profitable uses.
 - Cost efficiency: reduced need for man-guarding, lowering operational costs significantly.



Case study 2: Major Middle Eastern Airport

Challenge:

With significant expansion, the airport faced the growing complexity of managing multiple isolated security systems. This fragmentation led to inefficient incident response times and reduced situational awareness, impacting overall security operations.

Solution:

The airport implemented the Everbridge Control Center to consolidate all its security systems, including CCTV, access control, and advanced biometrics, into a unified management platform. This move was aimed at improving coordination and response times by leveraging centralized data and control capabilities.

Benefits:

- **Automated incident response:** the solution enabled automated detection and response, significantly reducing the time taken to address security threats and improving the airport's overall security posture.
 - **Scalability for future growth:** the adaptable architecture of the Everbridge Control Center ensured that the airport could easily incorporate future technological advancements and expand its security measures as needed without disrupting existing operations.
- **Unified security management:** by integrating various security systems into one platform, the Everbridge Control Center enhanced real-time situational awareness and operational control across the airport's terminals.



Conclusion

If your assessment results indicate a moderate or high need for a PSIM solution, it's clear that such a system could significantly enhance your security operations. We recommend consulting with a PSIM specialist who can provide further insights and help you explore suitable options tailored to your specific requirements. This assessment guide aims to start your journey towards a more integrated and efficient security management system.

For a more comprehensive understanding of what to look for in a PSIM solution, make sure to read our detailed "PSIM buyer's guide". This guide elaborates on the essential features, benefits, and considerations that will help you make an informed decision tailored to your unique needs across various industries.

Taking the next step towards a comprehensive security management system with Everbridge Control Center could be pivotal in enhancing your organization's security posture. We invite you to schedule a demo to see firsthand how our solution can meet your needs and help you manage your security operations more effectively.

Request a demo of Everbridge Control Center

By leveraging the advanced features and integration capabilities of Everbridge Control Center, you can ensure your organization remains secure, responsive, and ahead of potential threats.

Go to:

<https://www.everbridge.com/demo/>



About Everbridge

Everbridge, Inc. empowers enterprises and government organizations to anticipate, mitigate, respond to, and recover stronger from critical events. In today's unpredictable world, resilient organizations minimize impact to people and operations, absorb stress, and return to productivity faster when deploying critical event management (CEM) technology. Everbridge digitizes organizational resilience by combining intelligent automation with the industry's most comprehensive risk data to Keep People Safe and Organizations Running™.

 Visit [Everbridge.com](https://www.everbridge.com)

 Read our [company blog](#)

 Follow us on [LinkedIn](#)

 Follow us on [Twitter](#)

[Get in touch](#) to learn about Everbridge, empowering resilience.

